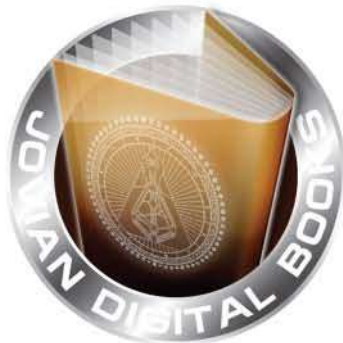
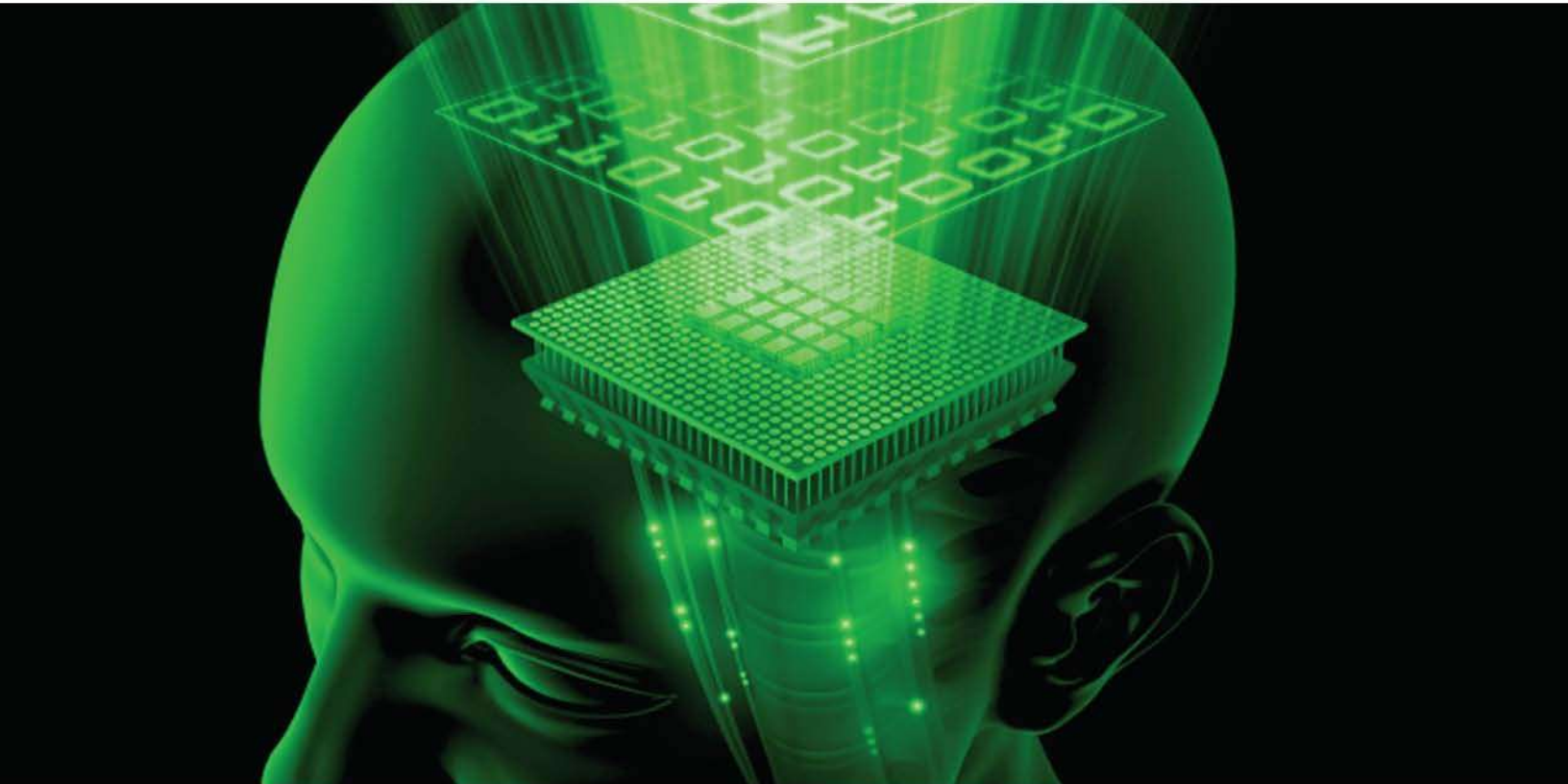


POST GRADUATE RAVE PSYCHOLOGY

RA URU HU



INTERNATIONAL HUMAN DESIGN SCHOOL



Cover/Mau Cattaneo

Transcribed/Patricia Balentine

Proofing/Eileen Smith

Layout/Becky Markley

The Illustration Library contains all of the full-sized original course illustrations.



The Rave BodyGraph™ and Rave Mandala™ are registered trademarks of Jovian Archive Corporation.



TABLE OF CONTENTS

Introduction to Post-Graduate Rave Psychology x

Lecture One 1

DreamRave and the Weak Point	1
We Live Two Lives: Waking and Dreaming	2
Ra's DreamRave: Projector	2
Weak Point.....	3
A Projector Example	3
Projectors are the Most Conditioned Beings	4
The Projector is Deeply Vulnerable	5
The Need to See the Legitimacy of a System	6
The Experiment of Education	6
Surrender	7
A Split Definition	8
A Basic Split Definition.....	8
A Broad Split Definition.....	9
Emotional Authority.....	9
Waking Projector/Sleeping Generator	10
Dream State Theme of Frustration	11
The 50/27 and the 28 th Gate in the Dream State.....	11
A Different Strategy and Authority	12
The Weak Point: The 50 th Gate	12
Defined Solar Plexus/Undefined Spleen.....	13
Power in the Dream State	14
The 50 th Gate is Desired in the Waking State	15
Patience.....	15
DreamRave: Pressure to be Spontaneous.....	16
The 50 th Gate Accentuates the Dilemmas in the Chart	18
The Emotional Being Filters through Their Wave	19
Wake Up and Remind Yourself Who You Are	20
The Five-Centered Dream State	20

Lecture Two..... 23

Tone and Distraction.....	23
Elaborating Theoretically and Practically.....	23
The Independent Variable	23
Transformation of Awareness	24
The Significance of Perspective and Resonance	24
The 2 nd Color: Possibility	24
Correct Environment and Resonance	25



The Difference between the Dependent and Independent Variable	26
Environment: Who is in Your View.....	26
Perspective Begins with the Surrender to Environment	27
More Important to Pay Attention to Environment Than Distraction.....	27
The Nature of Distraction	28
Distraction Gives Us Balance	28
Possibility/Probability.....	29
The Conceptualizing Mind Needs a Binary.....	30
Tone: Cognition	31
Resonance Tendency	31
1 st Tone Cognitive Theme.....	33
The Need to Have the Other Side of the Story	34
The Projector Metaphor.....	35
Awareness	36
Being an Audience to Your Intellectuality	37
Facebook	38
Your Intellectuality: Derivative or Correct Perception?	38
Map Your Perception Framework	39
Environment Aligns You to the Forces You're Intended to Resonate To.....	40
Pay Attention to Your Environment and Implant Your Formula	40

Lecture Three 43

Tone, Motivation and Awareness	43
Being Nodally Correct One Slides through Life	43
Transference and Distraction	44
Perspective	44
Your Form Cannot Resolve Your Personality Issues.....	45
Personality is for Self-Education.....	46
The Personality is Lost without Dualism	46
Judgments about Neediness	48
The Cognitive Process.....	49
1 st Color, 1 st Tone	49
This Transference Has a Certain Value	50
The Initiating Trajectory	51
No Choice	52
Being Fully in Life as a Witness Consciousness.....	52
The Right Mind	54
Tone.....	56
Chain Studies	56
The 4.1.1	57
The Personality Mars	58
The Feeling of Wholeness.....	59
The Insecurity of the 1 Can Disappear	59
Look at the Transits and Resonance	60
You're Not in Charge of Your Mind	61



Lecture Four	63
Prime Nodes and Link Nodes.....	63
The Nodes Aligns Us to Neutrino Information.....	63
The Magnetic Monopole	64
The Nodes are Where the Design and Personality are Linked to Each Other	65
The Link Nodes	66
The Link Node's Responsibility	66
The Prime Node	67
The Lunar and Planetary Square	67
The Binary That Brings Together the Nodes and the Lunar and Planetary Square	68
PRR DLL.....	69
A Cave Person	69
Personality Nodes: Limitation	69
Resonance with the 1 st Line and 1 st Color	70
1 st Motivation: Fear	71
The Lunar and Planetary Square Connections	71
The Link Node	72
A Mind That Pays a Lot of Attention to its Body	73
The Inner Resonance System	74
Color First, Then Tone or the Line	76
Mercury	76
Deconstruct Your Own Chart	77
The Link Nodes are a Deep Mystical Place Buried Inside the Mechanics	77
The Personality's Struggle	78
Link Nodes are Magic.....	78
The Prime Node Provides for Continuity in the Transformation Process.....	79
The Link Node Locks the Personality to the Form	80
The Link Nodes Bind You to Your Life.....	81
Refining Your Frequency	81
Lecture Five.....	83
Experiencing the Other	83
We're Here to Connect to the Minds of Others	83
How We Experience the Other	84
Internal Resonance	84
We Resonate to the Other Person's Mind.....	85
What We Take from the Other	86
You Think about Others in the Way You Resonate to Them	87
Color is the Key	87
The Venus.....	88
The Pluto	89
How We Discover the Other's Uniqueness	90
We're Designed to Connect to People in a Very Specific Way	91
A Short Cut to Meeting the Outer Authority of the Other	91



Freeing Oneself from the Responsibility of Relationships	92
Watch it at Work and Enjoy It.....	93
The Correct Way to Look at the Charts	94
One Person Attracted and the Other Not Attracted	95
Resonance and the Not-Self	95
Recognizing Color Resonance	96
Alok's Insight of His Design	97
Connections on the Color Level, Not on the Surface.....	97
Software Question.....	98
Quality and Quantity	99

Lecture Six 101

Child and Parent Resonance 1	101
Understanding Penta	101
The Mother's Chart.....	102
Right Brain.....	102
Left Environment	103
The 5 th Gate: Habits	104
Single Definition	104
The Child's Chart	105
Companionship in the Variable.....	105
Pure Emotional Generator	106
Single Definition and Openness.....	107
The Open Throat.....	107
The Open Mind	108
The Connection Chart	108
The Dilemma in the Relationship is the Mind.....	109
The Way the Child Experiences the Parent.....	110
Relationships and the Emotional Streams.....	111
How the Child Resonates to the Parent	112
Connection at the Tactile Level	114
How the Parent Experiences the Child.....	114
The Mother Has Trouble Seeing the Child	115
Genetic Commonality	116
Base Orientation	116
Seeing How the Layers Unfold	117
Blind Spots.....	118
Hierarchy of Resonance	118
The Mother Can't See Herself	119
Resonance Doesn't Resonate to Resonance	120
Both 2 nd Color Personality Sun/Earth	120
Passenger Consciousness is Here to Experience the Whole Holistic Bond	121
6 th Tone Keynotes of Touch and Acceptance	122

Lecture Seven..... 123

Child and Parent Resonance 2.....	123
-----------------------------------	-----



Understanding the Relationship between One Human Being and Another	124
Transformation in Consciousness Has to Take Place in Relationships.....	124
The Importance of the Parent-Child Relationship.....	125
Surrendering to Choicelessness	125
Not-Self Parents Have Agendas for Their Children	126
Awareness is Transcending the Attachment We Have to Our Process	127
Enjoy the Mystery	127
Open Centers	128
The Busy 20/34 Mother	128
Transference to Guilt.....	130
Honesty between Parents and Children	130
Honesty and Outer Authority	131
Mother's Profile: 1/3.....	132
The Daughter: Powerful, Tribal Generator	133
The Mother Has to Make a Bargain with the Child.....	134
Denial Gates.....	134
Emotional Child/Non-Emotional Mother.....	134
One Compromise	134
Five Electromagnetic Connections	135
Synthesizing the Resonance	135
Personality Earth in the 27 th Gate.....	136
Base Orientation and Fractals	136
Acceptance and Awareness	138
Honesty in Relationships	138
Choicelessness	139
Lecture Eight	141
Link Node Orientation	141
Base is There before Cognition	141
The Nature of Partnership	142
Real Communion is Rare	143
Fractal Relationships	144
The Personality Crystal	145
Basic Fractal Alignment.....	146
Fractal Connections in Relationship to the Variable.....	146
Ideal Communion.....	150
Difficult Scenarios	150
Cosmic Families	151
Refinement of Relationships	152
Genetic Imperative and Resonance	153
Sameness	154
Accurate Base Time.....	155
Variable and Right-Ness.....	155
The Vast Ordering Principle	156
Outer Authority.....	156
A Simple Experiment	157



Lecture Nine 159

Orientation: What's Not There	159
Disinterest	159
Just Now Chart	159
The Emotional System	160
Sexual Pressure	161
4 th Base Orientation	161
4 th Base Interests: The Nature of How Life Works.....	162
No Interest in 3 rd Base Interests	163
The 5 th Base	164
We're Designed to Have Disinterest.....	165
Finding Common Ground.....	165
The Refinement of Where We're Intended to be Focused	165
No Sexual Interest	166
Not Interested in Their Body.....	167
Seeing the Lack of Well-Being in Mental Interests	167
The Not-Self and Disinterest.....	168
The Development of the Outer Authority	169
Mapping Orientation Relationships.....	169
Defining the Way We See.....	170
The Mind Mess-Up.....	171
Base Orientation Refinement	172
Interrelationships with the Other.....	173
Levels of Connection	174
A Comment on the Class.....	175
Matter Is.....	176
Using Disinterest for Aligning Base	176
5 th Base Personality	177

Lecture Ten 179

Synthesis	179
To Transform Somebody's Life is on the Surface	179
The First Generation of the Knowledge	180
Building an Analysis from a Single Element	180
Example of a Right Autistic Mind	181
No Need to Use All Elements in a Reading	181
No Need to Explain the Information.....	182
The Future: Specialization	183
Experience is Very Important	183
Two Sides of Being a Rave Psychologist	183
Being a Personal Teacher	184
The Theme is Recognition	185
A Contractual Teaching Arrangement.....	185
A Process of Education, Digestion and Experiential Recognition	186
The Client is Studying Themselves	186



The Complete Rave Psychology Program on Film.....	187
Questions and Answers	187
Not Having Completed the Seven-Year Cycle.....	187
Auditing the New Rave Psychology Program	188
Overdoing Explanation.....	188
Monitoring a Client's Mental Health	189
Going through the Process Alone.....	190
The Mind.....	191
The Magic of Mechanics	191
Aligning to this Plane.....	192
Illustration Library	193
Lecture 1: DreamRave and the Weak Point.....	193
Example Chart.....	193
Example DreamRave Chart with Keynotes.....	194
Example DreamRave Composite Chart	195
Lecture 2: Tone & Distraction	196
Tone & Distraction Chart.....	196
Lecture 3: Tone, Motivation & Awareness.....	197
Example Chart.....	197
Personality Internal Keynotes	198
Lecture 4: Prime Nodes and Link Nodes	199
Example MMAI Chart	199
Prime Nodes and Link Nodes with Example Chart	200
Lecture 5: Experiencing the Other	201
Example Chart 1	201
Example Chart 2	202
Example Charts Together	203
Example Chart 1 with Planetary Squares Separated.....	204
Lecture 6: Child & Parent Resonance 1.....	205
Mother's Chart.....	205
Child's Chart.....	206
Mother-Child Connection Chart	207
Mother and Child's Side-by-Side Charts – Personality	208
Lecture 7: Child & Parent Resonance 2.....	209
Daughter-Mother Composite Chart	209
Lecture 8: Link Node Orientation.....	210
The Four Base Orientation.....	210
Child-Parent Personality Base Orientation to the Others Link Nodes.....	211
Lecture 9: Orientation – What's not There	212
Example Chart for the Day	212
Example Chart: Personality Base Configuration.....	213
Lecture 10: Synthesis	214
Example Chart for the Day	214

~